

# TECHNICAL DATASHEET

## Stainless steel hand pallet truck

Hand pallet truck entirely built in stainless steel AISI 304 (including the pump and the hydraulic components) suitable to work in the aggressive and corrosive environments where the cleaning and the hygiene are the most required values and where there is serious problem of corrosion related to the use of corrosive acids and saline solutions. The bearings are sealed waterproof and the bushings are polyamide as required by the food industry. It is the ideal and clean solution for the handling in the agrifood, chemical and pharmaceutical industries. It is corrosion-proof, maneuverable and ergonomic and it is built to withstand regular high-pressure cleaning and disinfection satisfying the strictest hygienic regulations. Also available in stainless steel AISI 316.



### Technical features EHP-20

- ✓ corrosion-proof chassis for aggressive and corrosive environments
- ✓ ergonomic tiller arm, robust long-term durable structure
- ✓ built to withstand regular high-pressure cleaning and disinfection avoiding dirt deposits and the spread of germs and bacteria
- ✓ hygienic features and easy access to the components (lower cleaning and maintenance cost)
- ✓ easy to handle, quick lifting
- ✓ maximum stability


Hand pallet truck with integrated weighing system equipped with 4 stainless steel Ip68 load cells assembled on the forks and a multifunction weight display placed in a comfortable position not interfering with the handling operations. In this way you can do 2 things in one time: transporting and weighing, by knowing immediately the weight of every pallet lifted. It's no longer necessary to drive back and forth to a fixed floor scale with the load, so you save time and manpower. It is fully manufactured in stainless steel AISI304 (including the lifting pump and the hydraulic components) and it is suitable to work in the aggressive and corrosive environments where the cleanings and the hygiene are the most required values and where there is serious problems of corrosion related to the use of acids and saline solutions. The bearings are sealed waterproof and the bushings are polyamide as required by the food industry. It is the ideal and clean solution for the handling in the agrifood, chemical and pharmaceutical industries. It is corrosion-proof, maneuverable and ergonomic, built to withstand regular high-pressure cleaning and disinfection, satisfying the strictest hygienic regulations.



### Technical features EWHP-20

- ✓ corrosion-proof chassis for aggressive and corrosive environments
- ✓ ergonomic tiller arm, robust long-term durable structure
- ✓ built to withstand regular high-pressure cleaning and disinfection avoiding dirt deposits and the spread of germs and bacteria
- ✓ hygienic features and easy access to the components (lower cleaning and maintenance cost)
- ✓ maximum stability
- ✓ 0,5 kg. division
- ✓ accuracy +/- 0,1% of the maximum capacity
- ✓ weight indicator with waterproof Ip68 stainless steel case
- ✓ LCD display with 6 figures of 25 mm
- ✓ powered by rechargeable internal battery (50 hours) with charger and automatic switch-off

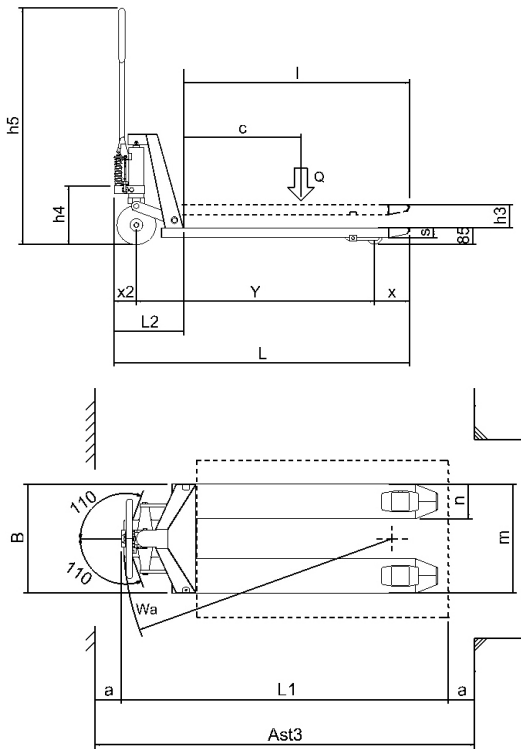
Model: **Easyinox EHP-20S/T - EWHP-20**

 Code: UMR.EHP20/EWHP-20.EN Edition: 05/2021 Language: English

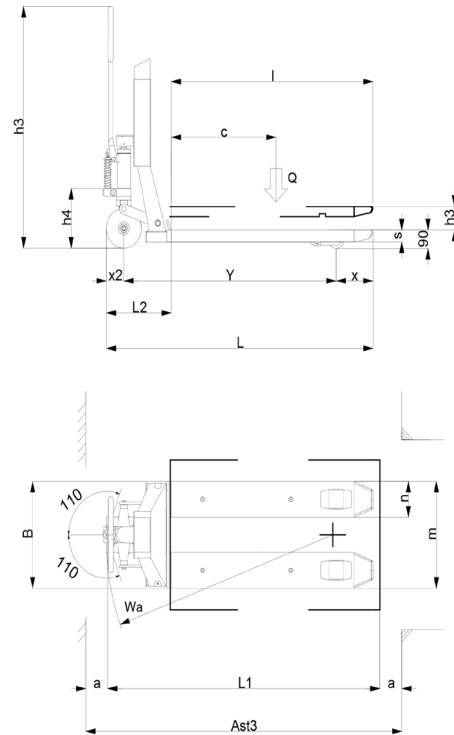
## Options packages:

- \* stainless steel AISI 316
- \* double load wheels
- \* tailor-made chassis to handle special loads
- \* custom forks length and width

Technical specification according to VDI 2198, technical values are referred to the standard product. Different masts, different tires, additional equipment, etc. could produce other values. Information and data are given for information only. Italiana Carrelli Elevatori srl will have the sole right for technical changes and improvements without giving any notice.








| Pos.   | Mod. EHP-20 |       |
|--------|-------------|-------|
| Q      | t           | 2.0   |
| C      | mm          | 600   |
| I      | mm          | 1.150 |
| L      | mm          | 1.500 |
| X      | mm          | 180   |
| X2     | mm          | 150   |
| Y      | mm          | 1.200 |
| L2     | mm          | 350   |
| L1     | mm          | 1.500 |
| M      | mm          | 520   |
| N      | mm          | 165   |
| B      | mm          | 520   |
| S      | mm          | 50    |
| H3     | mm          | 115   |
| H4     | mm          | 300   |
| H5     | mm          | 1.215 |
| A      | mm          | 100   |
| WA     | mm          | 1.280 |
| AST3   | mm          | 1.700 |
| WEIGHT | Kg          | 76/80 |



| Pos.   | Mod. EWHP-20 |       |
|--------|--------------|-------|
| Q      | t            | 2.0   |
| C      | mm           | 600   |
| I      | mm           | 1.150 |
| L      | mm           | 1.530 |
| X      | mm           | 212   |
| X2     | mm           | 150   |
| Y      | mm           | 1.215 |
| L2     | mm           | 380   |
| L1     | mm           | 1.560 |
| M      | mm           | 535   |
| N      | mm           | 180   |
| B      | mm           | 535   |
| S      | mm           | 60    |
| H2     | mm           | 115   |
| H13    | mm           | 90    |
| A      | mm           | 100   |
| WA     | mm           | 1.350 |
| AST3   | mm           | 1.835 |
| WEIGHT | Kg           | 150   |

Italiana Carrelli Elevatori s.r.l.

 via Albere 3/E, 36060 Romano d'Ezzelino (VI) Italy  
 +39.0424.382080  +39.0424.510432  
 www.easyinox.eu  info@easyinox.eu



**EASYINOX**